



Union Oil Gas Loading Station
Pc - Ry Station Avila, Calif.
Union Oil Co. Ford Runabout



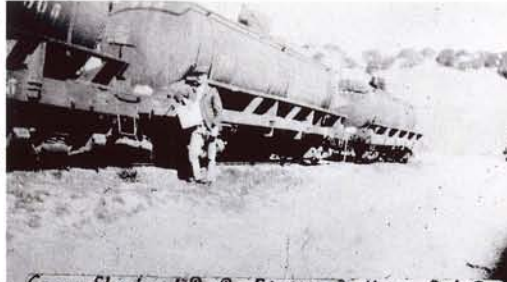
New Rocks Wks



Album No. 51
157 1/2 ft. Road John Simas -
Sulphur Springs P.C. Trans.
= 7 mgs - Drum station -
La. Panama



John Simas Tank Car Loader
Union Oil Co. Gas Loading
Pc Ry Station Avila, Calif.



Casey Shephard Tank Car Loader
Pc Ry Station Avila Calif.
Union Oil Co. Avila, Calif.



Album No. 58
Union Oil Tank Farm



Brigantine Hecker Wagon family group at ranch
J. G. Carit Header Wagon Family Picnic at Avila
Album No. 44 63

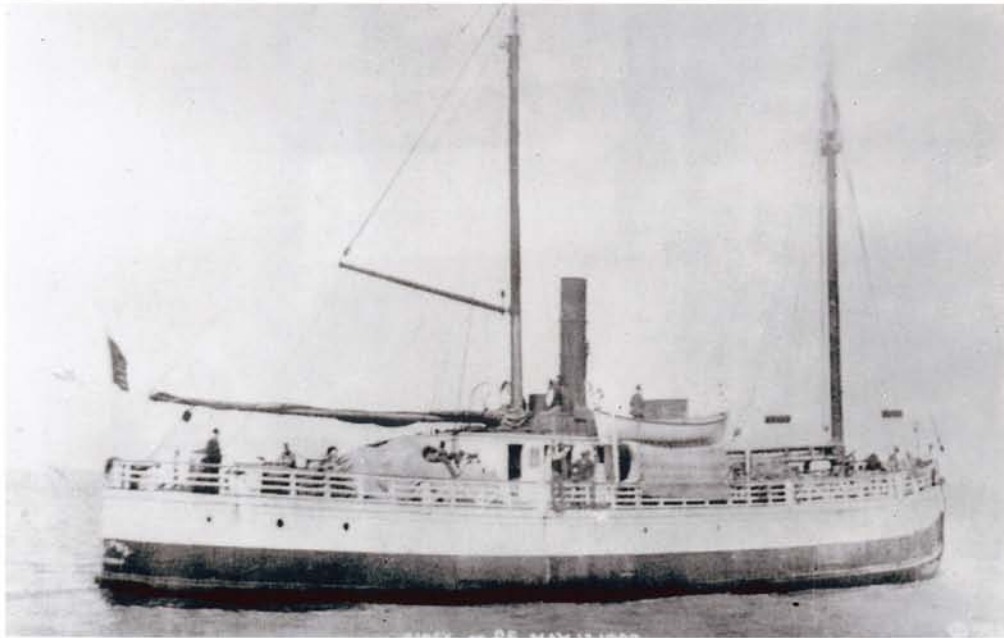
Narrow Gauge P. C. Ry. Sta. East Hot Springs
San Luis Obispo County, Cal.



Album #1 66
P.C. Train
East of
Hot Springs



Album #2 71
Wall Photo
No. 71
Front Street
Avila Beach
2 x 8x10 1937



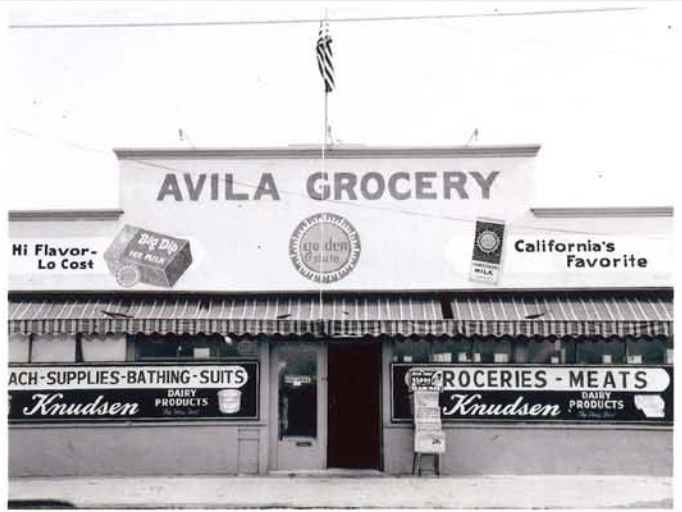
Album #2 No 76
Ship
Avila Beach
Capt. J. B. ...
Capt. J. B. ...
Capt. J. B. ...
Capt. J. B. ...
Capt. J. B. ...
Capt. J. B. ...
Capt. J. B. ...
Capt. J. B. ...
Capt. J. B. ...



Album #3 78
Dedication
of
Custom House
Avila Beach, California 1927



78
 Post
 Santa Beach, Calif.
 P.O. Box 22
 Custom House 1927
 Cook Fine Tough in front
 of U.S. Custom House
 Santa, California
 3-11x14
 The Post Office
 Monday through Friday
 10-5:30pm



79
 Showing front of store
 Post office
 Catalogue in album
 1967



85
 U. Condit
 other notes
 Interior John Hooper
 Hawk tunnel



P. of San Luis + Avila

90
 U. Condit
 1915
 Avila Refinery
 Taken from
 Hot Springs Mountain
 East of Santa
 Location marked Beach



91
 Picnic Santa Beach
 1909
 3 posts street Post office



93
 Pool Hall
 San Miguel + Front street
 Santa Beach, Calif.



94
 ©
 Building Union Oil Pump Station
 with Call
 Producers Transportation
 8210

Aston Photo

Avila Station
 Producers Transportation Co.



95
 Lumber yard
 2-22-40
 Avila Station
 Producers Transportation
 1912



June 20, 1964
 104
 Union Oil Pump Station
 Boiler House
 Begun on photo Pump Station
 8 actual June 20, 1964



107
Anne Ballou on Carls Beach
July 12, 1964 - Sunday
East and West views
one looking west
with the pier
in the foreground



132
St. Paul
Carls Beach, Calif.
John Hayford



133
Mrs. John Hayford



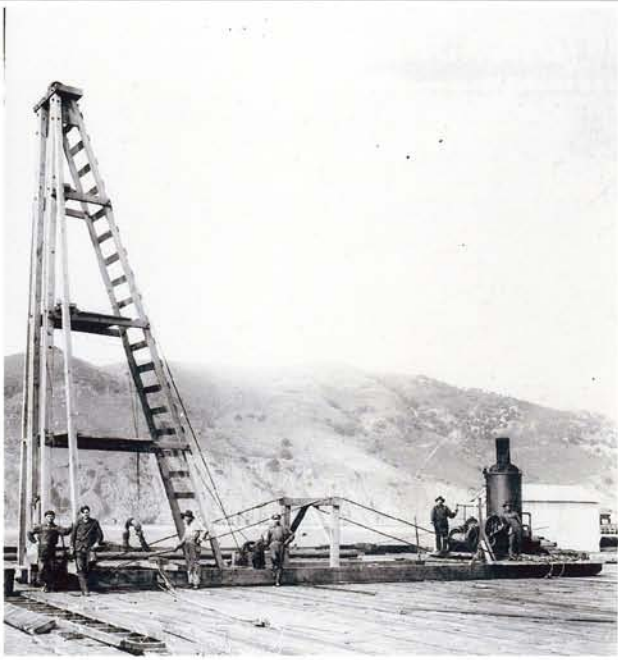
136^A

*Old Union Oil Company
Refinery Site
Point Harford
Calif.*



166

*6-17-66
Admiral Fishing
Point Harford
California*

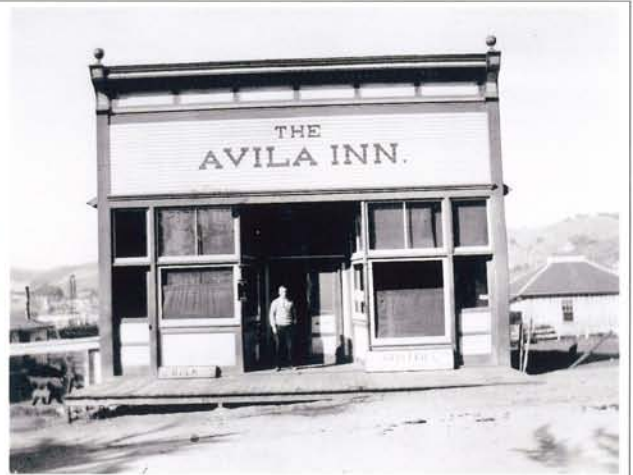


173

*3-5-27
Logan Brothers
Repair Old Harford Wharf
during early 1920's*



182
The old oak trees
at Avila Beach, Calif.



195
Grant Hansen Store & Post Office
at Avila
1909 - 1910



247
C. Conant
210 Beach
Avila Beach, Calif.
1910
Old light house, buildings

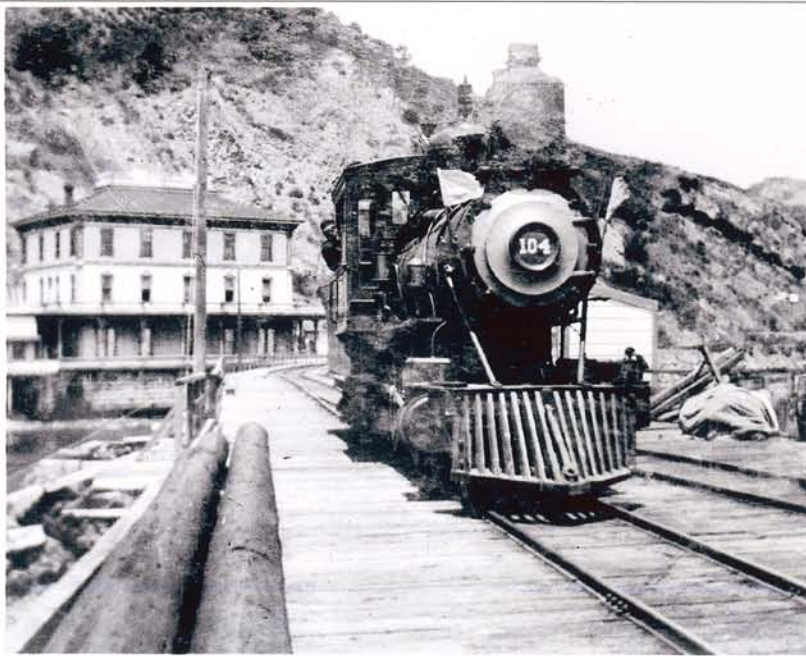


254

Roads of heavy oil buried deep
on the west end of the Civil Beach.
Results from the 1926 Union Oil
Company Tank Farm Fire
lightning, flood & storm



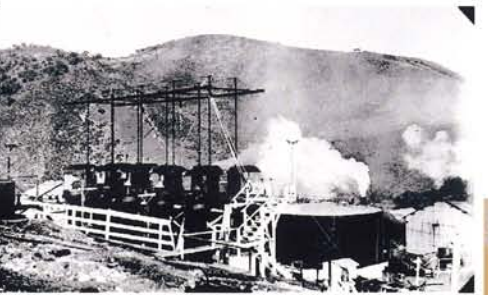
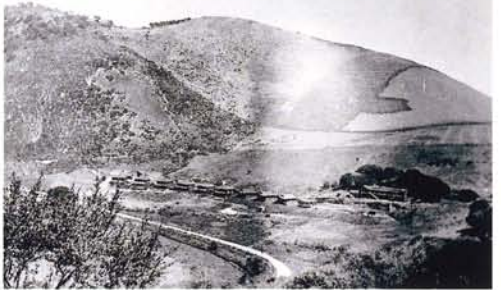
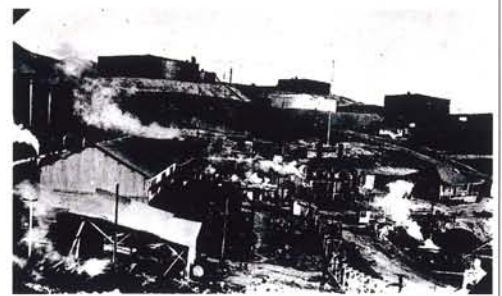
By Grant Condit (collected by 1932) 263
Water front on Civil Beach showing
a strip of land south of the retaining
wall. This land was purchased from
the Union Oil Co. by Robert Dorman
in 1940. Later Mr. Dorman sold the
land to the Parks and Beaches.
Mr. Dorman's movement was directed
at keeping any debris from building
near the beach front. Some retaining
walls



O. Condit

266

1-5-47
Engine 104 near Hotel Marine
Point Hazard



J. Clant
Carls Beach
California
 1918-1919

Union Oil Company 268

1. Central Plant
2. Office, Lab. & Fire-stalls
3. Superintendent house
4. Steam-stills, Fore-stiller office
5. Crude Refinery
6. Union Oil Company houses
7. New U. O. C. houses
8. House, Pump house
9. House, house
10. P. C. R. R. bridge - Page 101 - album
11. P. C. R. R. bridge - Page 101 - album
12. U. O. C. Dargle - Page 99 - album



J. Clant

268-10

P. C. Bridge
Carls Beach
 1918-1919



Port San Luis, Cal.

Motor
Floor
1928

279
Port San Luis
P.C. Co. Ferry Table
W. J.



271
Avila Beach Parking Lot
1920's



Claret
278
Herman + Elsie Klauske
Avila Stage Line (1915 to 1919)
(Mant) (Fels)



279
Engine 105 near car sheds
San Luis Obispo
California



*Planet
Avila Calif* 280
 Old Port Harbor
 Hotel Wave, Harbor's wheel
 The old hose down railway
 near the tunnel, and the
 water tank High on the Peak
 1884 - 1885



282

1938

*P.C. Excursion train in front of the
old Bellvue Santa Fe School*



290

1912

*Avila Lumber yard
Front Street Avila Beach
California
Avila From the pier*



291

*Albacore - 1939 on Avila
Avila Beach, California*





*J. Covert
Crescent Beach, California* 295
*1909
2-527*
*Martinez
1909 Thomas Car.*



299
*J. Covert
San Juan Luis
Cave Landing
5 miles west of
Crescent Beach,
California*



302
J. Covert
*Port San Luis Light House
Tunnel & Lighthouse*



307
J. Covert
*Port San Luis
1915*

PORT SAN LUIS.



311
*Excursion Train in front
 of Hotel Maraud
 1910*



*U.S. Coast
 Avila Beach Calif.* 313
*Joe Shattuck's Avila Fish Market
 Avila Beach, California
 1918*



Southern California Railway, Avila, Cal. 316
*P. C. Freight train crossing
 bridge at Avila, Calif.
 The locomotive is near the Mare
 station
 In 1911 the Port Harbor Asphalt Refinery
 was built to the Port and the
 locomotive shown in the picture. A
 spur track led to the location see photo # 24*



318
Avila Beach Fire House



July 1961
 Claude & Port Martin
 Large Halibut - 28 1/2 pounds
 Hal & Ronby playing out fall for Dobyson
 Hal center F.
 Ronby R.F.



1962 Good School
 Halloween Parade
 Jimmy Lane Martin Brothers

