



San Luis Obispo Named Train Town USA

Thanks to the efforts of the San Luis Obispo Chamber of Commerce, The Central Coast Railroad Festival, Mayor Jan Marx and The San Luis Obispo Railroad Museum, The City of San Luis Obispo has been awarded membership in Union Pacific's *Train Town USA Registry* as part of the railroad's year-long 150th anniversary celebration. The City has received an official **Train Town USA** resolution signed by Union Pacific Chairman Jim Young and presented to *Mayor Jan Marx* on Saturday, October 6, 2012, during the CRRRF.

"We are proud to recognize San Luis Obispo while we commemorate our railroad's sesquicentennial celebration," said *Liisa Stark*, Union Pacific Director for Public Affairs. "The bond between our railroad and early settlements continues to strengthen and grow. Today, Union Pacific serves nearly 7,300 communities where we live, where our children grow up, and where we recruit our employees.

"Our shared heritage with San Luis Obispo is a source of pride as we remember our past while serving and connecting our nation for years to come."

The railroad has been part of the San Luis Obispo community since the 1880s with the Pacific Coast Railway and the Southern Pacific Railroad. Today the San Luis Obispo area

Continued on page 4

Museum Gets Ludwick Grant

October was a month of celebration for the Museum. Not only did it have a very successful open house for almost 600 visitors (see related article) but the **Ludwick Family Foundation** awarded SLORRM a grant of \$100,000 to help complete the restoration and conversion of the Freighthouse into a permanent Museum. Thankfully the goal of opening the building to the public next fall is now in sight.

Museum Vice President *Karl Hovanitz* is a long-time friend of *Art Ludwick* who has a large scale live steam railroad at his Glendora home in Southern California.

Karl's connection lead to the Foundation's invitation for the Museum to submit a grant request last April. The application was prepared by the Board of Directors with *Andrew Merriam* taking the lead in writing the grant request. The Museum now has one year to expend all funds. Of course we can do that! In fact working with RK Builders, a San Luis Obispo contracting firm, we hope to have the building shell complete by the Spring of 2013. Then we can move into the interior, furnish the building and construct the displays. The major portions of the Ludwick grant will go toward completing the interior electrical wiring and finishing the Museum including the restrooms, archive room, model area and the entrance, as well as providing a mechanical system that will make the former warehouse suitable to house archival materials and comfortable for the visiting public. *The Ludwick Family Foundation* joins the *Hind Foundation* and many other donors in making the restoration efforts possible. We look forward to personally thanking Art and members of his family and foundation for their support at our formal opening next October.

Reported by Andrew Merriam



L-R: Lindsay Miller, SLO Chamber of Commerce, Liisa Stark, Union Pacific Railroad; Brad LaRose, SLORRM President; San Luis Obispo Mayor Jan Marx holding Train Town sign; Vice-Mayor, Dan Carpenter and Curtis Reinhardt, CRRRF Director
Photo by Jamie Foster

Museum Open House



An estimated 600 to 750 people attended the Museum's Open House, October 6, 2012, held in conjunction with the **Central Coast Railroad Festival**. Positive feedback was received from the high energy crowd. About 50 visitors arrived on the Amtrak trip from Grover Beach. A steady flow of people lined up for the Speeder rides. The *Yosemite Short Line* Model Railroad Club modular layout had at least 400 enthusiastic visitors. Many current and retired railroaders came through the Museum.

Reported by Aron Kahn



Visitors enjoyed Speeder rides on the Museum Display Track.
Photos by Gary See

For more pictures of the open house go to page 6 of this Coast Mail at www.slorm.com/newsletter



Mission Statement

The San Luis Obispo Railroad Museum is a non-profit educational institution founded to preserve and present the railroad history of California and specifically the Central Coast. Collecting, restoring, and displaying relevant railroad artifacts, photographs and documents is its goal. This effort is supplemented by creating models, displays and graphics as well as operating historic railroad equipment to facilitate a better understanding of how railroads have affected our area's social, cultural and economic history.

SAN LUIS OBISPO RAILROAD MUSEUM BOARD OF DIRECTORS

- Brad LaRose *President*
- Karl Hovanitz *Vice President*
- Aron Kahn *Secretary*
- David Rohr *Treasurer*
- Arnold Jonas, John Marchetti, Andrew Merriam, Duane Powell, Gary See

Telephone 805-548-1894
e-mail: info@slorrm.com
web site: www.slorrm.com

Mail to: P.O. Box 13260
San Luis Obispo, CA 93406

Bill Pyper, *Newsletter Editor*
rrbill10@comcast.net

TIMETABLE

The following is a list of future meetings of the San Luis Obispo Railroad Museum. Business meetings are held the second Tuesday of each month at the Freighthouse, 1940 Santa Barbara Street, San Luis Obispo. Meetings begin at 6:00 p.m. All meetings are open to the public.

- February 12 *Business Meeting*
- March 12 *Business Meeting*
- April 9 *Business Meeting*
- April 12 *Bitter Creek Western Fundraiser*
- May 11 *National Train Day*
- May 14 *Business Meeting*
- June 11 *Business Meeting*

BY-LAWS AVAILABLE

Every member in good standing is entitled to a copy of the San Luis Obispo Railroad Museum By-laws. In the interest of economy, we have not distributed them to all members automati-

2 To get a copy, send a #10, self addressed, stamped, envelope to SLORRM, Post Office Box 13260, San Luis Obispo, CA 93406.

Renew your membership

The last line of your mailing address on the envelope is the current expiration date of your membership. Please check this date each time you receive a mailing from SLORRM. If the date is within a month or so of your receipt of the mailing, your remittance of the amount to renew your membership will be appreciated. Changes to your contact information should also be included. This will help assure that your membership is always current. Should your mailing address or e-mail address change, prompt submittal of updated information will help achieve this same goal. Thank you for your diligence and cooperation.

Become a Member

Membership in SLORRM provides an outlet for anyone interested in railroad history, train travel, railroad oriented entertainment and the value of railroad-ing to the community.

Membership is designed for those who love trains and wish to educate others, young and old, and who share an interest in the San Luis Obispo Railroad Museum.

Single members pay \$36 per year. A family can join for \$60 annually, and a sustaining member pays \$100 per year. Mail to SLORRM, Post Office Box 13260, San Luis Obispo, CA 93406-3260. Go to <http://www.slorrm.com> to download an application form.

Life Members receive an embroidered patch, enameled pin, the Coast Mail newsletter, and have voting rights for one person for life. *Use current age to calculate amount due.*

0-17 years	\$1200 or 5 payments of \$280
18-39	\$900 or 5 payments of \$220
40-61	\$600 or 5 payments of \$160
62 and older	\$300 or 5 payments of \$100

Family Life Members receive 2 enameled pins, 2 embroidered patches, the Coast Mail newsletter, and voting rights for life for two people residing at the same address. *Use the age of youngest family member to calculate amount due.*

0-17 years of age	\$1800 or 5 payments of \$420
18-39	\$1350 or 5 payments of \$330
40-61	\$900 or 5 payments of \$240
62 and older	\$450 or 5 payments of \$150

If making payments, the life membership card will be sent upon receipt of final payment. Until such time as the life membership is paid in full, the member will receive a yearly membership card. All payments made toward a life membership are non-refundable and failure to make a scheduled payment by the due date will result in forfeiture of all funds paid toward the life membership. Payment plans include yearly member dues.

New Members

Bob Behnke, David Carstensen, Cody Castggl, Neil Fernbaugh, Bill Giles, Robert Gordon, DeWitt Greill, Robert Schremp, Rick Somers and Anne Wilson have all joined SLORRM since the last Coast Mail was published. Bernie and Susan Kempker, Robert Mayberry and Alyce Thorp, Dennis Thurman family, Matthew Vurek and Peggy Haynes have joined SLORRM as **Family Members**.

Renewals

Robert Del Pesco, Ralph George, Marian Gregory, Shirley Clark Herbel, Chris Hurd, Kent Kenney, Lynne Maddy, Michael McGinley, and Diana Rheinisch have renewed their membership in San Luis Obispo Railroad Museum.

Life Members

Michael Boyack, Stephen Cake, Glen Matteson, John Miramon and Virlon Smoot have become Life Members of SLORRM. John and Deborah Hoefker have become **Family Life Members**.

Board Actions

Board membership to increase

The Board of Directors proposed, and the membership has agreed to increase Board membership from nine up to 21. This increase is needed to accommodate the increased workload as the Museum nears completion. The vote was 54 in favor, 4 opposed, and one abstention.

Reported by Arnold Jonas

Coast Mail numbering changed

Beginning with this issue, Coast Mail will be designated with an issue number instead of Volume and issue numbers. Because publication of Coast Mail has been somewhat erratic, the volume numbering system was confusing to some of our readers. Hopefully this will help.—*Ed.*

Coast Mail Expanding

In the last few issues of Coast Mail some stories and pictures have been left out due to lack of space. It is too costly to print more than 4 pages for mailing. Starting with this issue, pictures and historical stories will be posted on line as pages 5, 6, etc. They can be seen at www.slorrm.com/newsletter

Company Store

The San Luis Obispo Railroad Museum has a variety of items for sale for your enjoyment and to raise money for the Museum. T-shirts in both adult and children sizes, baseball hats, belt buckles, coffee mugs, enamel pins, embroidered patches, engineer hats and videos are all available by going to the Museum website, www.slorrm.com and click on **Company Store**.

SLORRM participates in SPH&TS Convention

The San Luis Obispo Railroad Museum took part in the **Southern Pacific Historical and Technical Society's** 2012 Annual Convention in Ventura, California, October 11th through the 14th. Board members Gary See, Andrew Merriam, John Marchetti and President Brad LaRose staffed a table to distribute literature and to inform visitors about the Museum.

A popular attraction at the table was the throttle mechanism from the Southern Pacific GS-4 steam locomotive #4454 that was saved at the SP San Luis Obispo yard just before the locomotive was scrapped.



SLORRM President Brad LaRose greets Rod Crossley, author of *Chasing the SP in California 1956-1958* and *Southern Pacific's Golden Empire 1954-58* at the SPH&TS Convention. Photo by Mike O'Brien, courtesy of SPH&TS



Left: Brad LaRose demonstrates the GS-4 steam locomotive throttle to a visitor at the SPH&TS convention. Right: Gary See, Andrew Merriam, John Marchetti and Brad LaRose at the SLORRM display table. Photos by Gary See



Many people stopped to ask about the throttle and had fun operating it. The members attended many of the workshops at the conference and enjoyed an excursion on the *Filmore & Western Railroad*.

SLORRM participation in the convention was very rewarding and well received by the officers and members of SPH&TS. Gary, John and Brad recruited several new members for the Museum. They greeted many SPH&TS members and created recognition of the presence and activities of SLORRM on the Central Coast of California.

The SPH&T Society is dedicated to preserving and disseminating the historical record of the Southern Pacific Railroad and its affiliates.

We look forward to attending their 2013 convention in Fresno and hosting the 2014 convention in San Luis Obispo.

For more information about the *Southern Pacific Historical & Technical Society* go to <http://www.sphts.org/>

Early Model Railroader Donates to SLORRM

William "Bruce" Lindsay with John Marchetti, Andrew Merriam and a few others, formed the *Daylight Club* about 30 years ago. This was one of the first model railroad clubs in San Luis Obispo.



Bruce has recently donated \$5,000 to the Museum. In recognition of his generosity, he will be named as one of the sponsors of the model railroad display in the Museum.

Also, as a token of appreciation, Bruce was presented a bronze paperweight with the San Luis Obispo Railroad Museum logo cast in bas-relief.

Photos and report by Andrew Merriam



Push Car and Bell Donated



Photo by Tom Mitchell

Museum President **Brad LaRose** had been in contact with **Geraldine Ferrar** for over 17 years, in the hope that she would donate a *Pacific Coast Railway* push car to SLORRM. Recently the push car, along with a very large and beautiful steam locomotive bell was donated to the Museum by **Stella Ferrar**, on behalf of the Ferrar family of San Luis Obispo.

Both the push car and the bell were obtained by Stella's father, Clarence Ferrar, who had been a Southern Pacific Railroad employee.

It is unknown where the bell came from. The only marking on it is the number 176, which was stamped on the bell after it was delivered to a railroad. Speculation as to what locomotive and what railroad it came from is: Texas & New Orleans, Central Pacific, SPRR, or possibly even a *Pacific Coast Railway* locomotive that had this number with a previous railroad. No PCRY locomotive was ever numbered 176.



Photo by Brad LaRose

Clarence Ferrar, while working for the Southern Pacific Railroad in 1946, went to the Pacific Coast Railway roundhouse at South and Higuera Streets in San Luis Obispo, where the last of the PCRY property was being sold off. This included steam locomotive number 110, and the push car. There is a photo of this car or a similar one in a roundhouse stall doorway in the *Gerald Best* book *Ships and Narrow Gauge Rails*, and in the *Curtis Johnson and Kenneth Wescott* book *The Pacific Coast Railway*.

This story continues on page 5, which can be found online at: www.slorm.com/newsletter

Join the Museum Volunteer Efforts

Over the past several months, the Museum Board of Directors has taken steps to involve more of our members (you) and address the opportunities and responsibilities that will come with a Museum facility which will open to the public in the Fall of 2013. The membership voted to expand the Board of Directors from 9 to 11 members in order to extend its outreach and coordination capabilities. In addition the Board has identified seven areas of activity that must be addressed if the Museum is to be an effective organization. Three of these are *hands-on* in nature: the restoration of artifacts and equipment, acquisition and curation of historic and archival materials, and construction and operation of a model railroad layout that represents railroading on the Central Coast. Four other areas are those traditionally associated with all organizations: Budget and Finance, Membership, Events and Public Relations and, Facility and Operations.

The Board has identified a committee structure to go with each of these activities (see diagram on page 6). This was done to make sure that the Museum operates in a coordinated and comprehensive fashion consistent with the mission statement. More to the point, these areas offer the potential for your involvement with the Museum. Depending on your interest you may want to join a committee which will provide guidance for the specified area of responsibility or join the many volunteers who come out and participate in our work days, doing activities that they enjoy.

The Board is now in the process of refining the work days. It is expected that activities will be divided to provide specific opportunities for those who wish to work on restoration of artifacts and rolling stock, those who will want to help restore and build the displays at the Museum (Freighthouse), those who want to help sort through the historic documents or participate in the model railroad which will be constructed to high quality museum standards.

More specifics will be provided in the next newsletter along with the people who will be heading the various committees or activity areas.

So make a wish list and a New Year's resolution. Decide where you want to become more connected to the San Luis Obispo Railroad Museum.

Contributed by Andrew Merriam

4

To look at the organizational chart go to page 6 of this Coast Mail at www.slorm.com

Museum Benefactor Greg Hind has died



Greg enjoyed a ride in a speeder at the Open House on October 9, 2010.

Photo by Jamie Foster



Greg and his daughter Kirsten power the Museum's handcar on the Display Track, October 8, 2011.

Photo by Aron Kahn

Greg Hind, well known San Luis Obispo businessman, philanthropist, environmentalist and innovator of sports apparel died Wednesday, October 31, 2012. He was 66. Well known in San Luis Obispo since 1974, Greg, through his Hind Foundation has generously donated to many local projects, including Friends of Wild Cherry Canyon, the Cambria Library, Piedras Blancas Lighthouse, Greenspace Chinese Temple and the Cambria Historical Museum.

Greg was instrumental in making the Museum a reality. As an organization it had been operating for approximately 20 years. However, he and his foundation, were able to bring the City resources together with his, enabling the Museum to open in the Freighthouse years before it could have without his assistance. Greg Hind and the Hind Foundation are owed a massive debt of gratitude. There is great sadness in the Museum and in the hearts of its members for his recent passing.

When Greg initially said that he wanted to help the Museum, he was asked if he had interest in any specific areas. He said "I like to help save old historic buildings." SLORRM certainly qualifies as an organization with an old historic building. He also said he was interested in model railroading. He was told of our plans for a very large historic model railroad in the freight house and was pleased.

To date the Hind Foundation has donated a total of \$100,000 to SLORRM for the purpose of restoring the 1894 Southern Pacific Freighthouse.

Reported by Brad LaRose and Bill Pypier

Bitter Creek Fall Festival



Engineer Virlon Smoot pilots the Bitter Creek Western Pacific Coast Railway electric locomotive carrying a group of happy riders at the SLORRM Train Festival, November 4, 2012.

Photo by Gary See

The San Luis Obispo Railroad Museum held its twice yearly fundraiser at the Bitter Creek Western Railroad in rural Arroyo Grande, California on Sunday, November 4, 2012. More than 200 adults and kids rode trains all day long and enjoyed the thrill of the rails. Thanks to all who helped put on the event and everyone who rode the rails in support of SLORRM. Special thanks to Karl Hovanitz for the use of his facility.

Train Town *from page 1*

is an important part of Union Pacific's business in the Central Coast region. Union Pacific serves a number of customers in the area and provides the infrastructure for Amtrak passenger operations. From agricultural products to construction materials, finished automobiles to consumer electronics, Union Pacific delivers the products American's use every day.

For more pictures of the Bitter Creek Fall Train Festival go to page 5 of this Coast Mail at www.slorm.com



Porsche Club of America tours Museum

On Sunday, September 30th, 25 members of the *California Central Coast Region of the Porsche Club of America* toured the SLORRM Freighthouse as part of a private *CCRRF Wine Rail Excursion*. **Andrew Merriam** gave them a thorough tour of both the inside and outside of the building and explained the restoration activities. He also gave a great history lesson about railroading on the Central Coast and answered lots of questions. *Photo and report by Gary See*

Pacific Coast Push Car

Continued from page 3

Push cars were used by the railroads as short distance transportation devices. They were often used by maintenance of way (MOW) crews to work on the tracks. These small, useful cars carried tools and track hardware. This car has deposits of congealed oil or grease on the frame and wheels at one end. This could indicate that the car carried a container of grease or oil and was pushed around the yard by a railroad worker as he greased the track switches. There is no indication that this car was ever attached to a motorized car. Track crews probably pushed it by hand.

This Pacific Coast Railway push car is unique as it is the only PCRY push car in existence. It was built in the machine shop of the railway, which was attached to the round house located at the corner of Higuera and South Streets in San Luis Obispo. The car frame is taken from an early design Model-T Ford automobile. The track gauge of



End view of PCRY Push Car.

Photo by Tom Mitchell

the push car is 3 feet. It has four 20 inch diameter stamped steel wheels, which were commonly used on hand cars (pump lever type). The car is about 8 feet long and 40 inches wide. A photo of the car or similar car, shows it with a wooden box attached to the frame, possibly of a stake pocket design. Research is still being conducted to locate photos and information about this historic artifact.

If anyone has photos or information about this or similar PCRY cars, please contact museum President/Curator Brad LaRose.

More Bitter Creek Pictures . . .



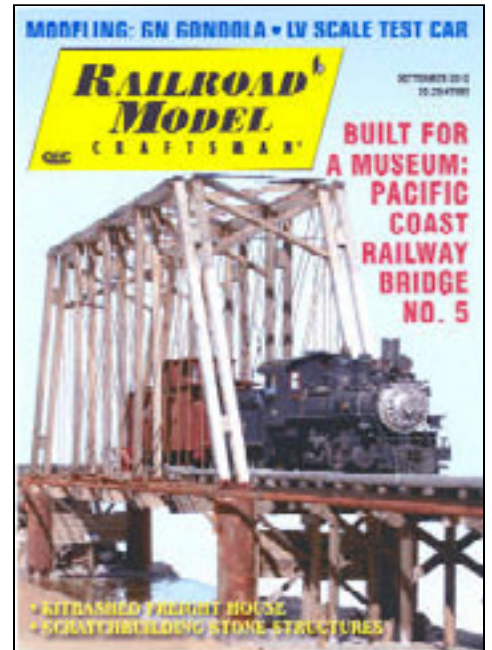
Lynne Maddy reaches for the winning ticket as two boys look on, hoping to win the train set.



SP SD45 Spirit of 76 cruises the Bitter Creek mainline carrying happy visitors. Photos by Gary See

Members Published

In the Spring-Summer 2012 issue of *Coast Mail*, we reported that Museum Board Members **Andrew Merriam** and **John Marchetti** are building many of the structures that will be part of the model railroad display in the Museum.



Railroad Model Craftsman magazine, in its September, 2012 edition, dedicates eight pages, including 15 photographs and five drawings, to Andrew's construction of *Pacific Coast Railway* bridge number five in Avila Beach.

The article, by Andrew, outlines a brief history of the PCRY and exacting details of the planning and construction of the model. This article is an excellent source of information for anyone wishing to build a model of this bridge.



Bridge No. 5 in 1977. photo by Bill Pyper



The *Mendacity Canyon Railroad*, the O-gauge model railroad layout of *Coast Mail* editor **Bill Pyper** was featured in Run 258, August-September issue of O-Gauge Railroading magazine. The 7-page article includes 17 photographs and a diagram of the layout. The text points out the humorous parts of the layout.



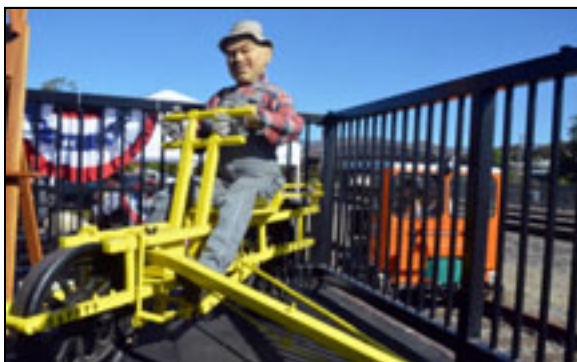
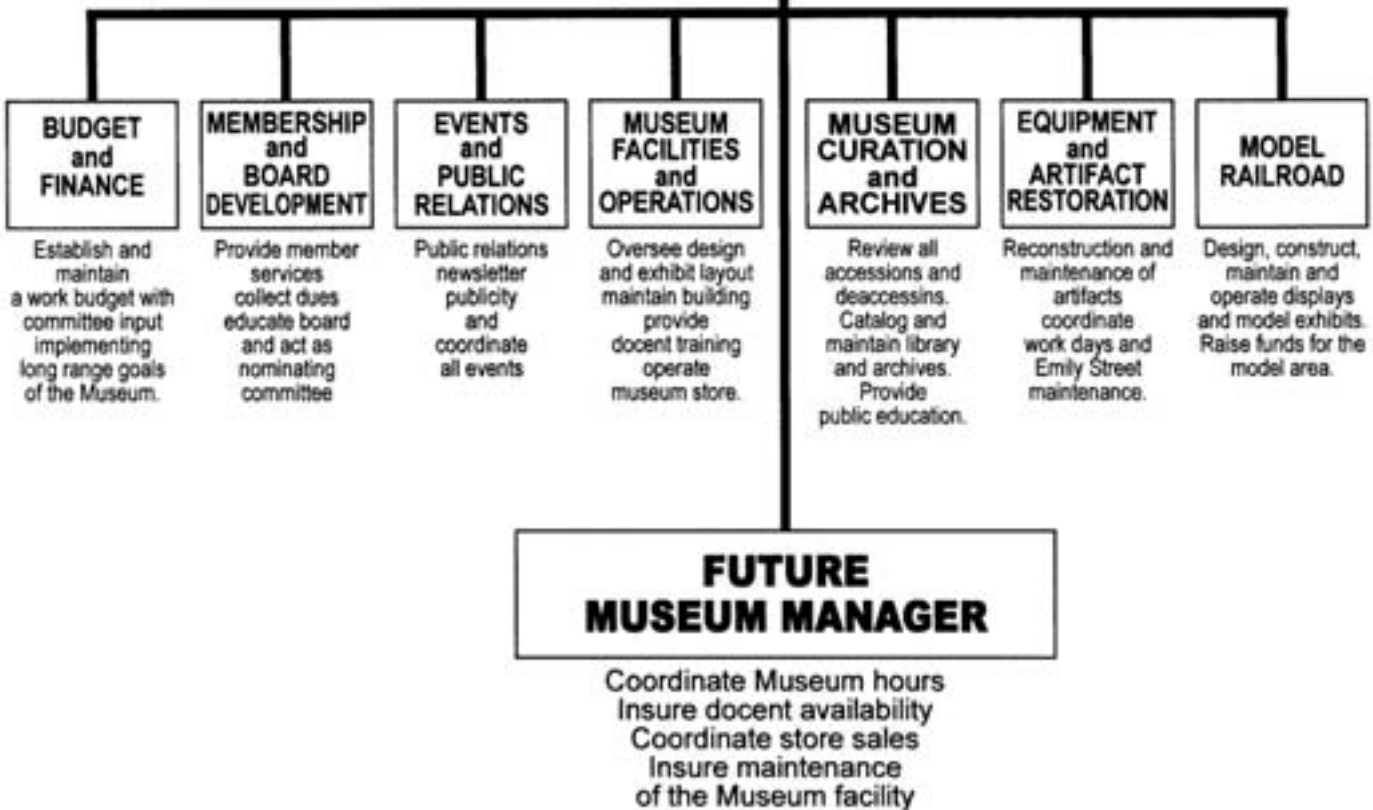
San Luis Obispo Railroad Museum

2012 Organizational Chart

GENERAL MEMBERSHIP

BOARD OF DIRECTORS
(Policy and Fundraising)
PRESIDENT/VICE PRESIDENT

EXECUTIVE COMMITTEE



6

Museum Open House on October 6, 2012 saw the Sheffield Velocipede displayed on the platform. Many people enjoyed the visiting model railroads. *Photos by Jamie Foster*